

1 FIRST FLOOR
 1/8" = 1'-0"

Converse County Library
New Douglas Library
 300 Walnut, Douglas, Wyoming 82633

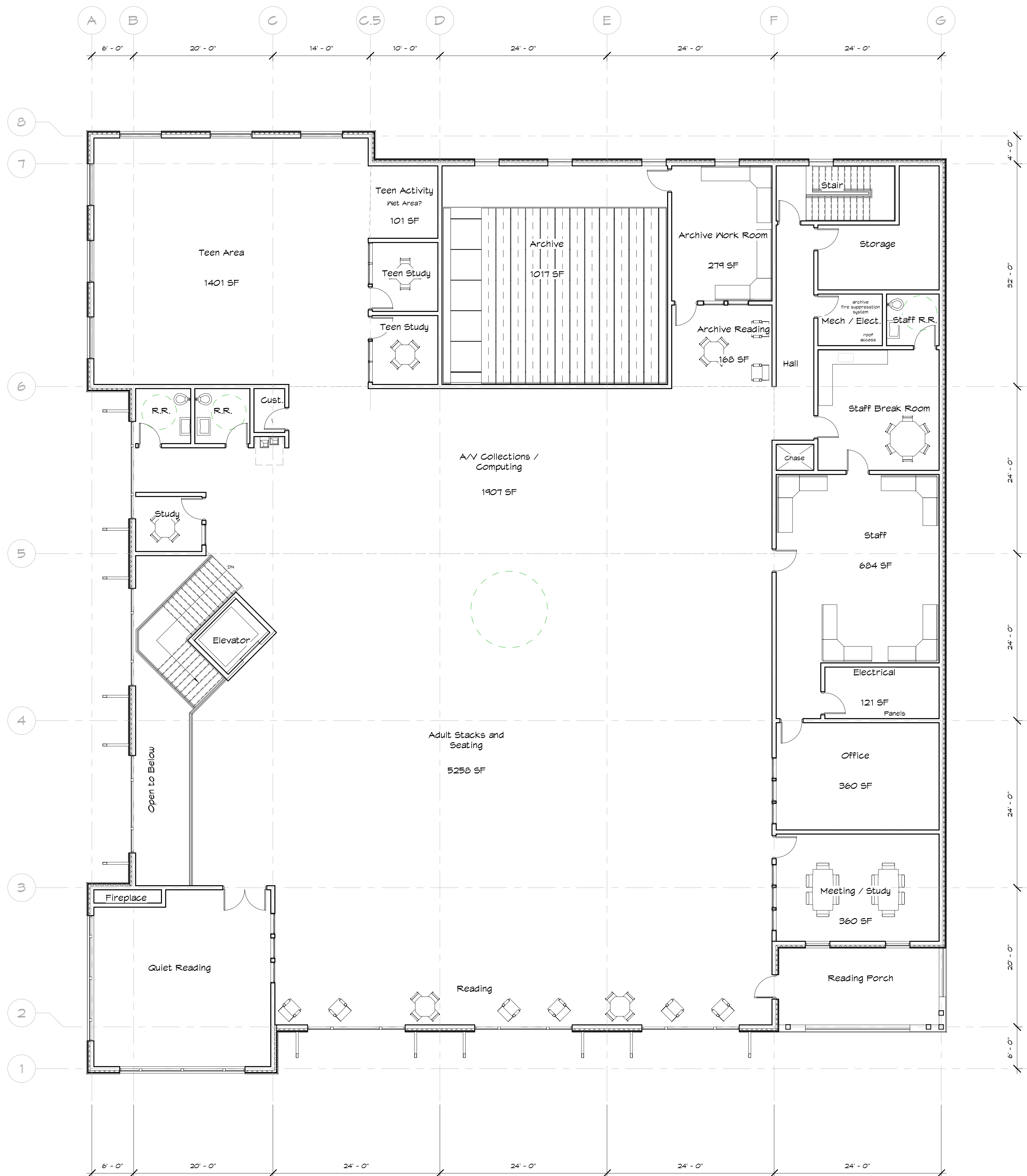
Job No. 13-CCL5
 Date: 2014/10/21
 Drawn By: JCB

REVISIONS

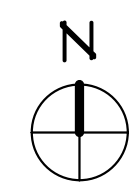
PRELIMINARY
 NOT FOR
 CONSTRUCTION

MAIN FLOOR PLAN

A101



1 SECOND FLOOR
1/8" = 1'-0"



Converse County Library
New Douglas Library
300 Walnut, Douglas, Wyoming 82633

Job No. 13-CCL5
Date: 2014/10/21
Drawn By: JCB

REVISIONS

PRELIMINARY
NOT FOR
CONSTRUCTION

SECOND FLOOR PLAN

A102